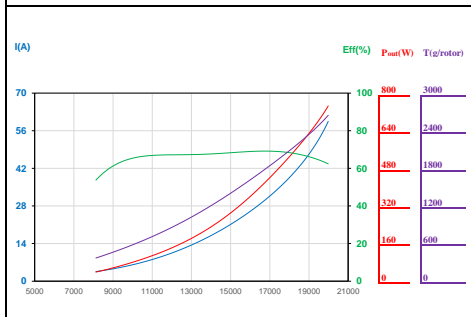
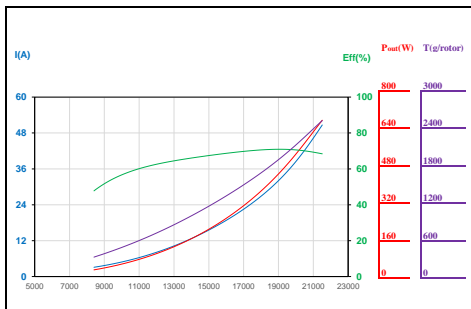


XR0TOR-2807SL 1500KV Specification (规格)

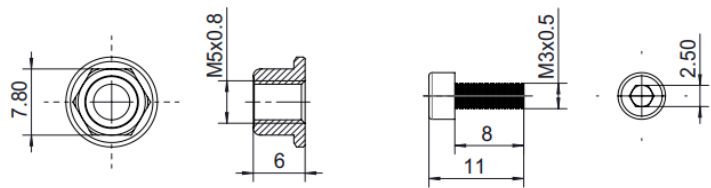
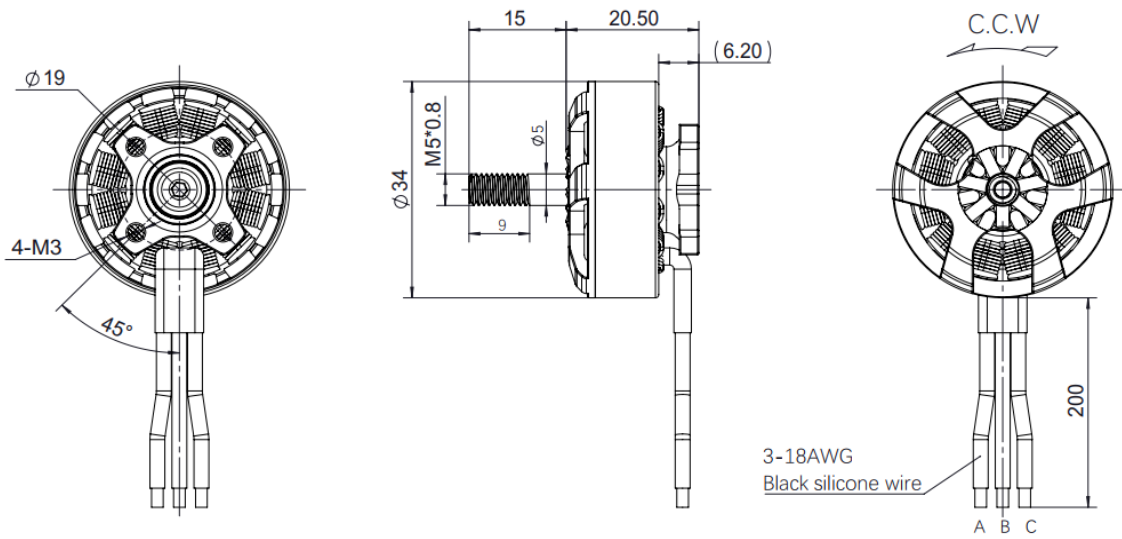
Rated Voltage (LiPo) 工作额定电压 (LiPo)	4-5S	KV KV值	1500KV
No-Load Current 空载电流	2.27A/20V	Resistance 相间内阻	43.6mΩ
Maximum Continuous Current 最大连续电流	59.5A/7s	Motor Weight 电机重量	58.7g
Maximum Continuous Rating 最大连续功率	1195W/7s	Pole/Slot 槽极数	12N14P
Maximum propeller pull 最大螺旋桨拉力	2646g	Motor Lead Type 线号	18AWG
Motor Size 电机尺寸	Φ 34 *20.5mm	Motor Lead Length 出线长度	200mm
Shaft Diameter 出轴轴径	D5*H5	Enamelled Wire Insulation Class 漆包线绝缘等级	耐200°C高温 H级
Shaft Length 出轴长度	15mm	Recommended ESC 推荐电调	XRotor FPV-G2-65A-4in ECS
Screw Diameter / Thread 底座螺纹	Φ 19mm-4*M3	Propeller 螺旋桨	4-5S:HQ7x3.5x3,HQ7x4x3

Load Performance 负载性能参数



Voltage(V) 工作电压	Propeller 螺旋桨	Throttle (%) 油门	Thrust(g) 拉力	Current(A) 电流	Power(W) 输入功率	Speed(RPM) 转速	Efficiency(g/W) 效率	Recommended full load continuous running time 推荐满载油门连续运行时间
20V (SS LIPO)	HQ7x3.5x3 Propeller	40%	535	5.5	110	10429	4.86	17s
		50%	808	9.3	188	12590	4.30	
		60%	1119	14.5	292	14650	3.83	
		70%	1471	21.2	427	16672	3.44	
		80%	1863	29.9	601	18599	3.10	
		90%	2266	40.3	810	20250	2.80	
		100%	2607	50.7	1019	21513	2.56	
20V (SS LIPO)	HQ7x4x3 Propeller	40%	605	6.5	130	10200	4.65	11s
		50%	895	11.1	224	12233	4.00	
		60%	1227	17.4	351	14120	3.50	
		70%	1600	25.6	515	15929	3.11	
		80%	1995	35.9	722	17646	2.76	
		90%	2366	48.2	967	19087	2.45	
		100%	2646	59.5	1195	19984	2.22	

The above data is measured at room temperature 25° C and sea level height. If the throttle input adjustment tensile force is measured, the full-load full throttle running time should be controlled, otherwise there is a risk of burning the motor.
(以上数据为室温 25° C、海平面高度的环境下,变化油门输入调节拉力测得,应控制满载全油门运行时间,否则有烧毁电机的危险。)



2807SL